



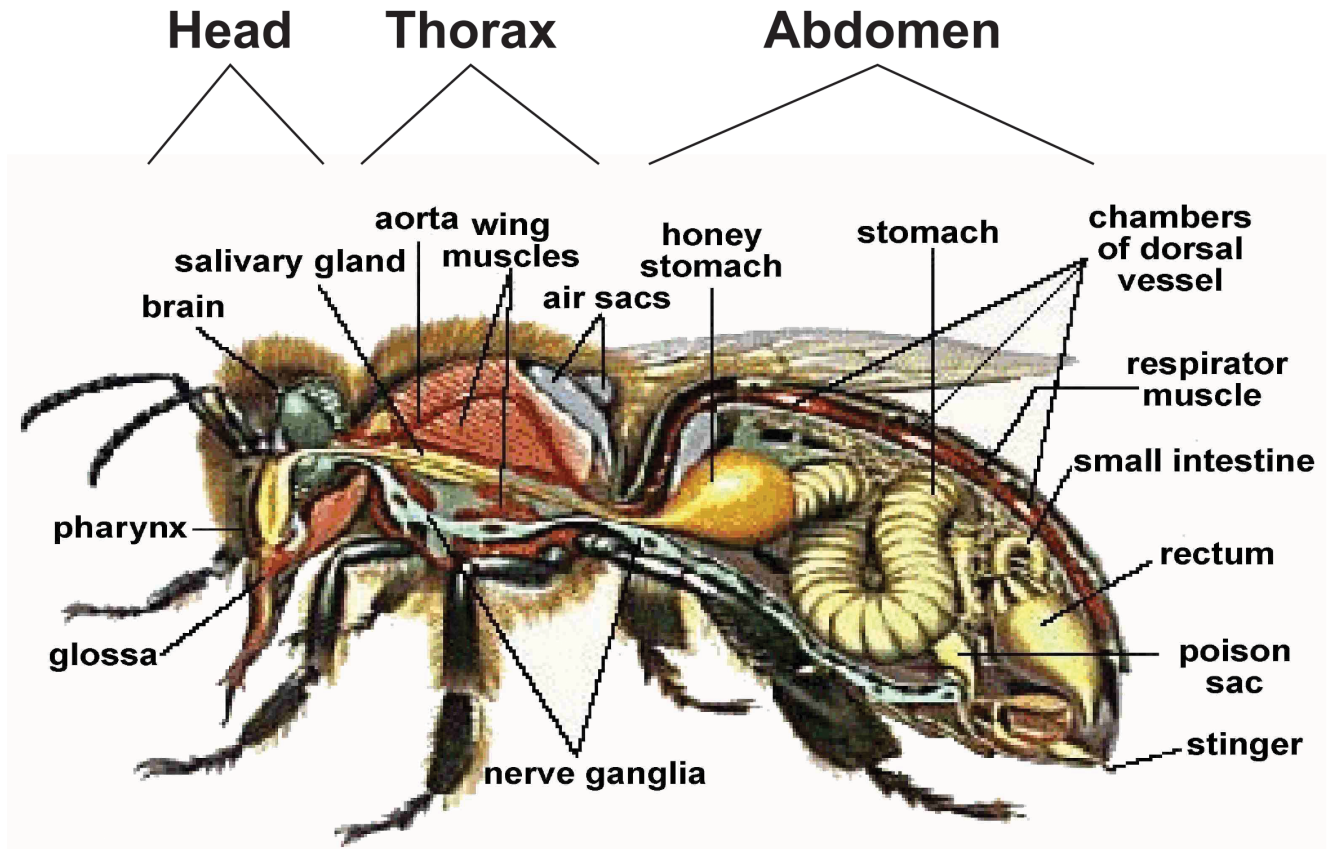


Class Insecta: Three major body regions in honey bees

Head: Houses large share of sensory organs - eyes, antennae, mouth parts

Thorax: Consist mainly of locomotory appendages - legs, wings and muscles for powering them

Abdomen: Chiefly consists of body organs - for digestion, waste removal, reproduction organs, and stinging system



The honey bee is part of a group of insects that engage in complete *metamorphosis*, with 4 developmental stages:



Egg *Egg is sausage-shaped
1/16 inch long (queen rearing stage)
Hatches after 3 days
Should stand on end at bottom of cell*



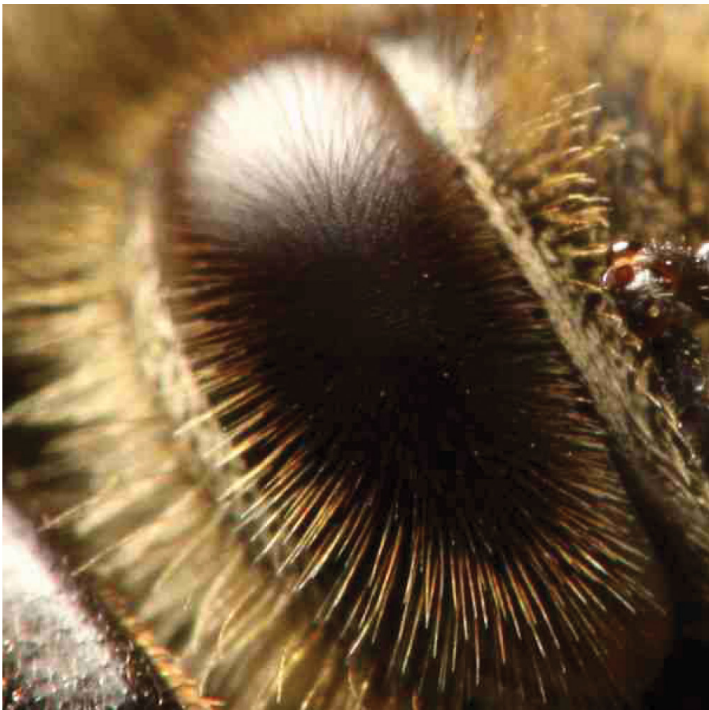
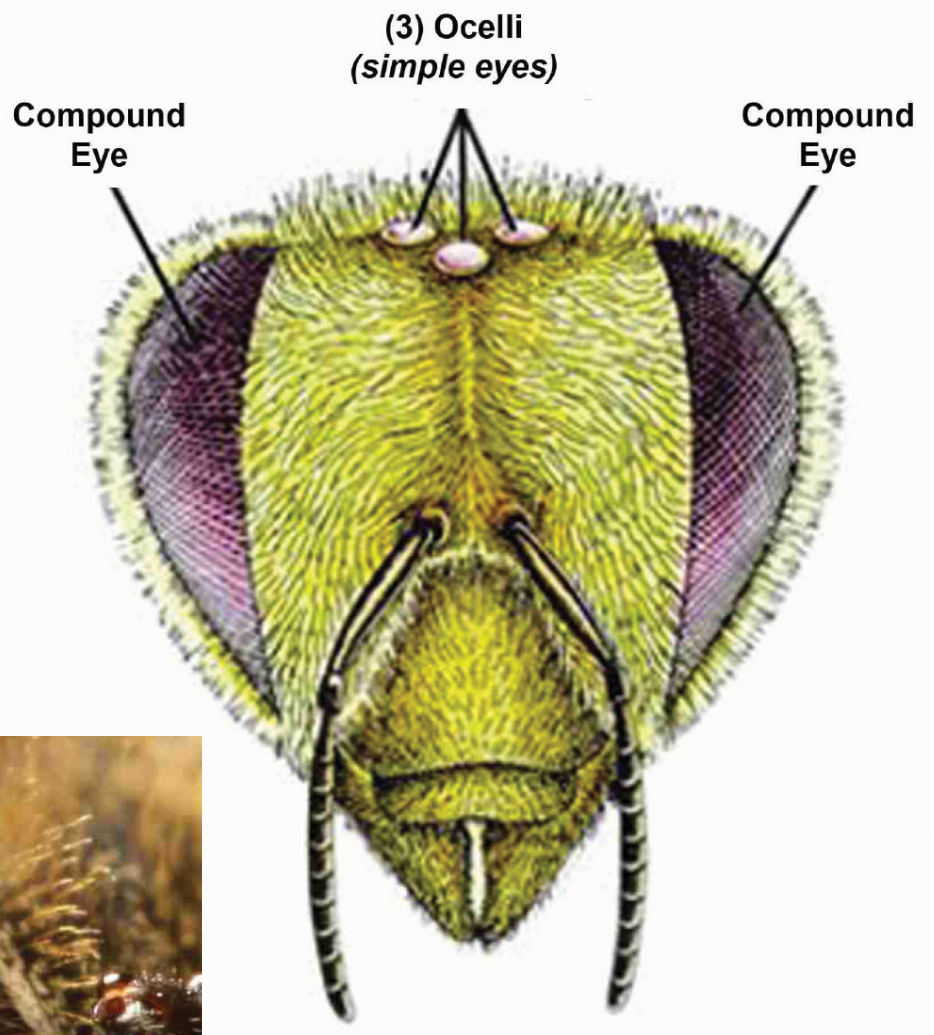
Larva *Starts as a bright white grub
Larva adopts a C-shaped posture
Elongates to prepupa - heads up
Workers cap over cell*



Pupa *Changes to likeness of adult bee
Body regions become apparent
From no pigmentation to darkening
Hair and wings develop*



Adult *Chew out through cell capping
Immediately starts cleaning out cell
Begins housekeeping & feeding brood
10-15 days average before flying or
wax production*



What They See

Compound Eye Composite

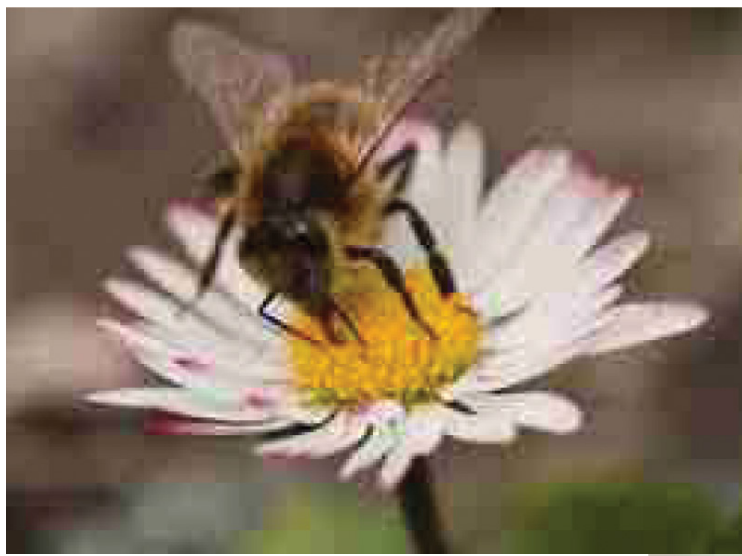


Iridescent Nectar Guides



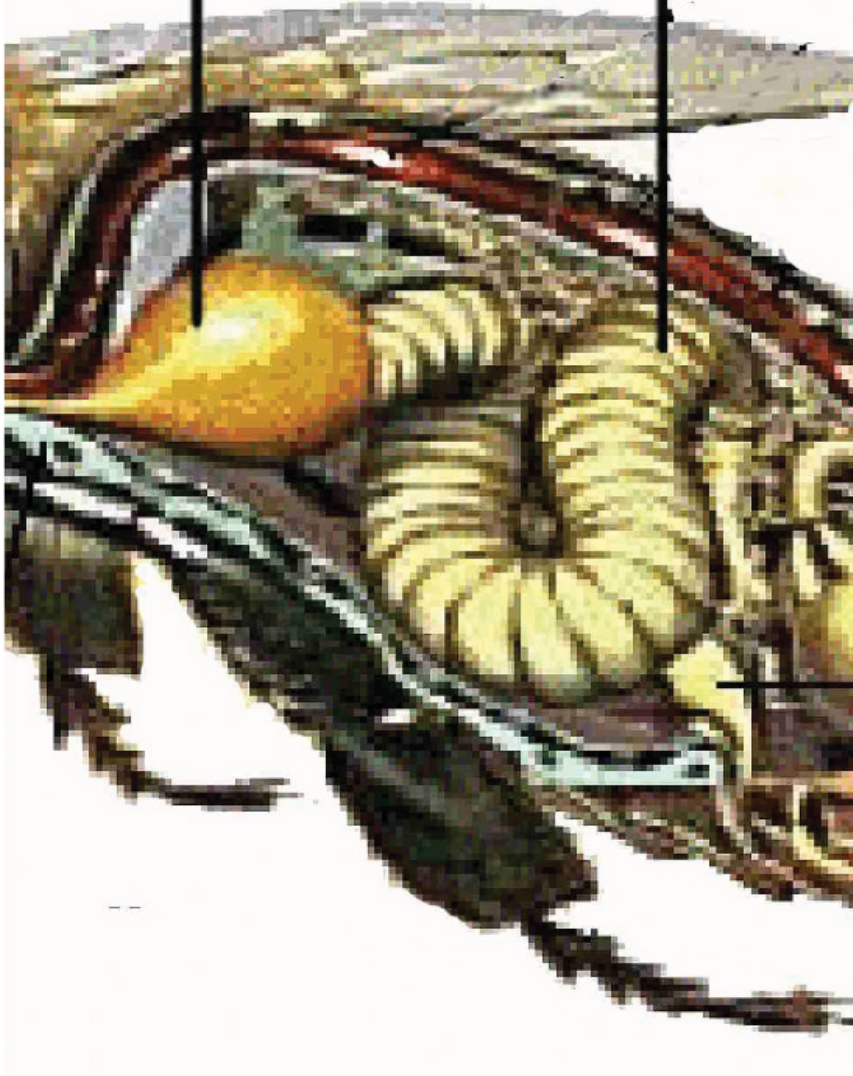
Bees Do Not See Red Looks Black

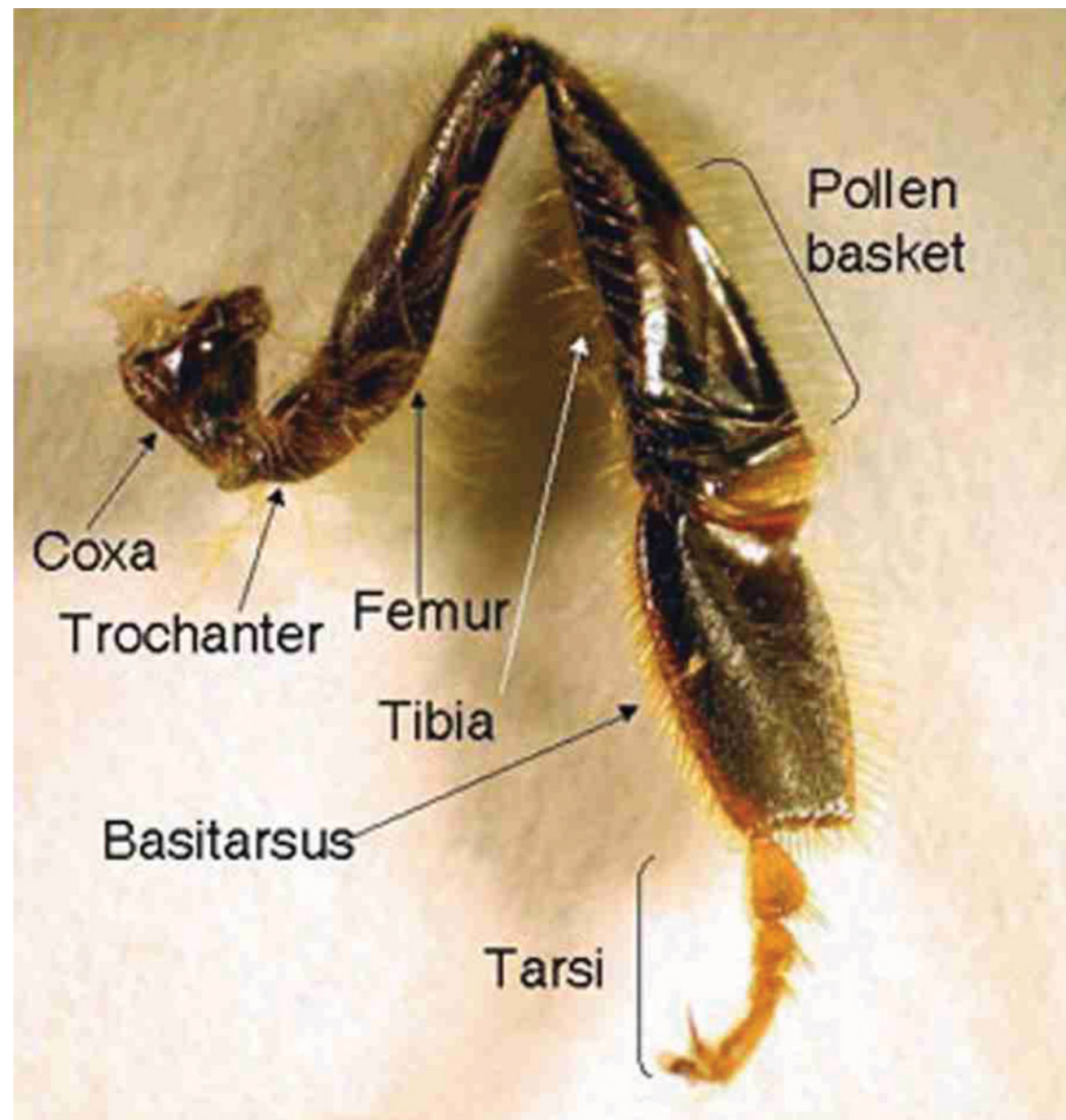




**honey
stomach**

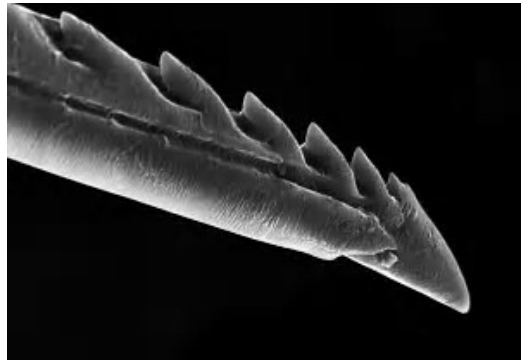
stomach













Drone



Queen



Worker



